

SMART IRRIGATION

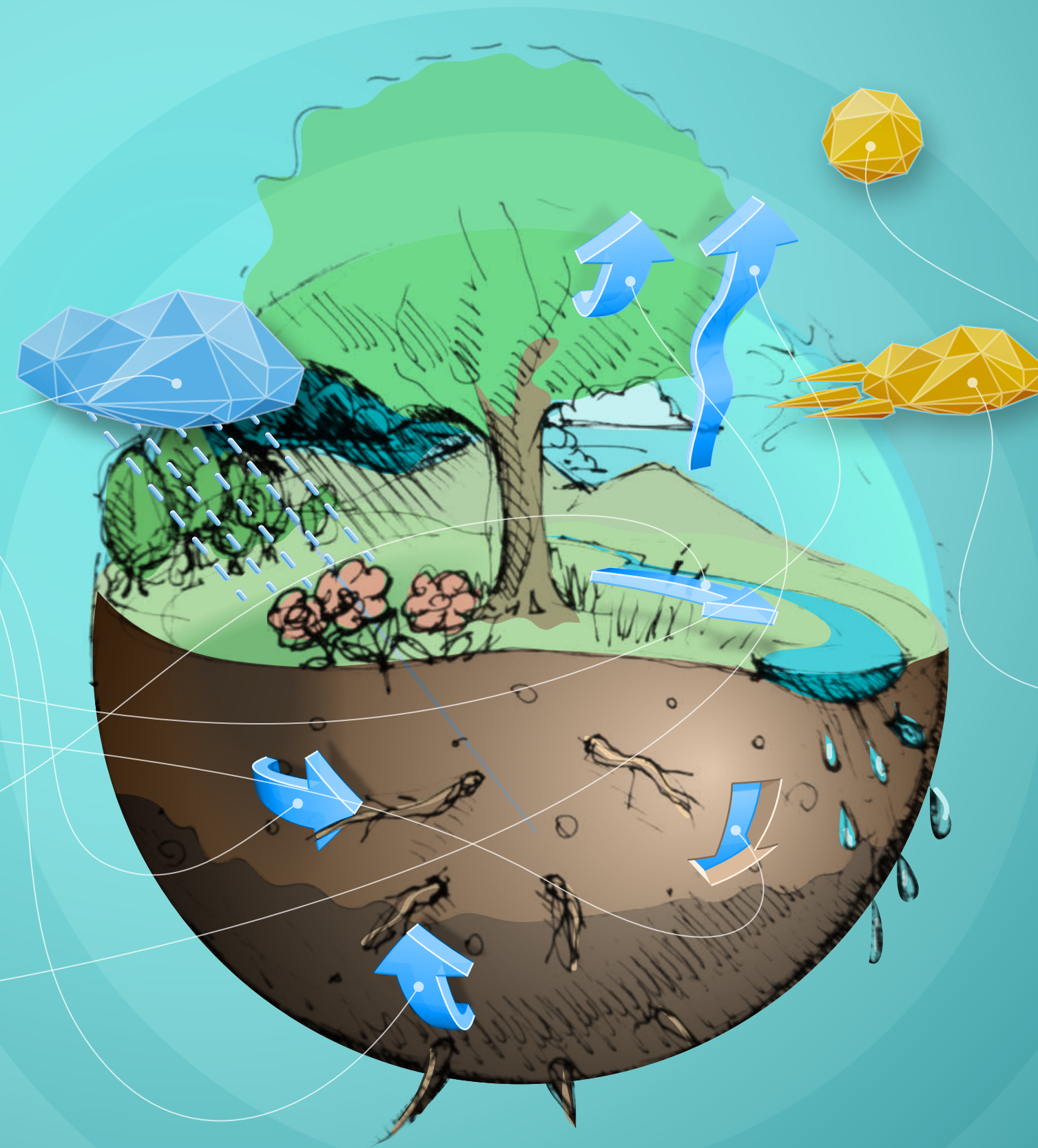
IRRIGATING IN HARMONY WITH THE WEATHER™

You water your plants, but where does that water go?

The water wets the soil where the plant roots can absorb it. If it would just stay there, irrigation would be simple, but it doesn't.

It evaporates from the topsoil, and seeps down into the groundwater table (or out the bottom of your plant pot). Water that the soil couldn't absorb is lost as run off, and even water that the plant does absorb is lost through its leaves, through transpiration.

The good thing is we can calculate how much goes where. We need to know the plant, the soil, and most importantly the weather.



What's the weather got to do with it?

The weather has a big impact on the rate at which water evaporates from the soil and transpires through the leaves.

Temperature and sun exposure, as well as wind and humidity, have the biggest impact. By tracking these as well as rainfall we can precisely calculate how much water must be replenished through irrigation to maintain proper soil moisture. Your typical irrigation timer won't do this for you, but a smart irrigation controller will, which could save you as much as 50% of your landscaping water, or more.